

JOIN THE RETIRED FRIENDS CLUB OF GREENDALE FOR...

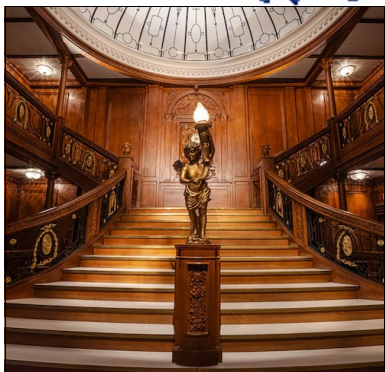
# Titanic: The Artifact Exhibition



at Saunders Castle at Park Plaza  
with luncheon at Venezia Restaurant

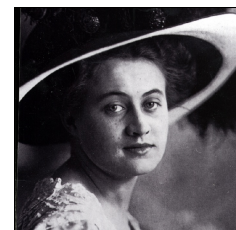
November 21, 2024

Today we head to **Boston** to embark on an unforgettable interactive tour of the Titanic featuring more than 250 recovered artifacts from the site of the shipwreck—two and a half miles below the surface of the North Atlantic.



We will step into the shoes of a passenger boarding the ship in April 1912, first receiving a replica boarding pass, then exploring the meticulously re-created ship. We

will follow a chronological journey walking through halls, exploring the galleries and peering into cabins while learning about the lives of the passengers and crew on board. For example, Dorothy Gibson— a silent film star who at the time was the highest paid actress in the world and Francis Browne— a budding Irish photographer credited with capturing some of the most famous interior shots that are still heavily circulated today. In the exhibit we will also learn the real story behind the Titanic’s journey from construction to eventual recovery. The genuine artifacts on display offer emotional connections to the forever-altered lives of those who were on board.



The Saunders Castle at Park Plaza is a 15,000 square-foot event space with a soaring ceiling height and an open floor plan. Brick and wrought iron detail provide an elegant backdrop. It has been host to many high-caliber events such as the 2019 Downtown Abbey Exhibit and it is currently the home to Lighthouse ArtSpace Boston.

Before the exhibit we’ll enjoy a sumptuous meal with breathtaking views of Boston Harbor at **Venezia Restaurant**. This family run business has been serving up classic Italian dishes for more than 25 years. *The meal features:*

**Choice of: Boston Baked Haddock, Pasta Primavera, Chicken Piccata or Chicken Parmigiana w/ pasta**  
**Also includes: Garden Salad, Dessert, coffee/tea**

**\$130 per person** (includes taxes & gratuities)

Make checks payable to: RETIRED FRIENDS CLUB OF GREENDALE or RFCG

**Please contact:** GEORGE BARRY (508) 799-0739, 48 Fairmont Ave., Worcester, MA 01604

10:30AM DEPART IMMACULATE CONCEPTION CHURCH, 353 GROVE ST., WORCESTER, MA

5:45PM APPROXIMATE RETURN

**DEGREE OF DIFFICULTY: 2 - MODERATE (SOME WALKING)**

**Retired Friends Club of Greendale • Titanic Exhibit • November 21, 2024**

Name: \_\_\_\_\_ Phone #: \_\_\_\_\_

Email Address: \_\_\_\_\_ Cell Phone #: \_\_\_\_\_

Address: \_\_\_\_\_ Ci ty: \_\_\_\_\_ State: \_\_\_\_\_ Zip: \_\_\_\_\_

Single Travelers: Emergency contact name/phone#: \_\_\_\_\_

Special needs (wheelchair/walker) and special requests (dietary), please contact us.

Are you a member of RFCG? Yes \_\_\_\_\_ No \_\_\_\_\_

Landmark Tours & Cruises, Inc. arranges the components of the tours and does not own or operate the independent suppliers of services including motorcoaches. Trips cancelled due to weather conditions are handled on a per trip basis. Refunds will depend on timing of the cancellation and supplier policies. Landmark Tours reserves the right to adjust cost based on fuel or other surcharges imposed by airlines or other vendors.